

The **H100/C** by **HCI** is a 100% full port ball valve for use in complementing the **Terminator System** product line where integrated accessory features are not required. Like all **Terminator System** valves the **H100/C** boasts a state of the art forged brass body and hard chrome plated brass ball which insures reliable, leak-free performance.

The **H100/C** also features the "triple sealed stem". Utilizing a virgin PTFE gland packing and two Viton O-rings stem seals this valve ensures the most reliable and high cycle-life stem available anywhere. The **H100/C** is the perfect compliment to the incredibly high standard set forth by all the other **Terminator System** products.

Pressure/ Temperature Ratings:

1/2" - 2": 600 PSI WOG Non - Shock

2-1/2" - 4": 400 PSI WOG Non - Shock

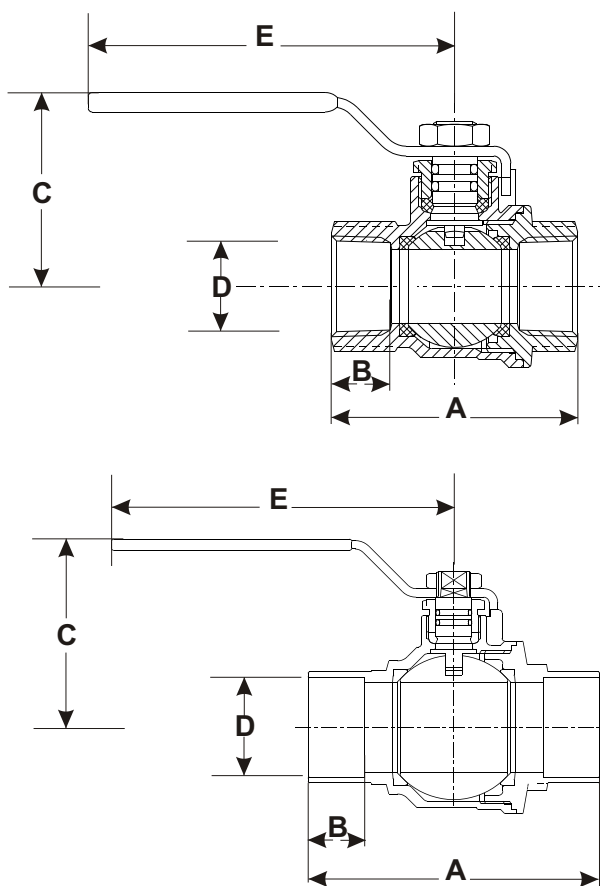
All Sizes: 300 Deg. F. Maximum

Optional Accessories:

- Handle Extension - Memory Stop - Red Aluminum T-Handle

- Stainless Steel Round Handle - Flexible Hose Connectors

Dimensional Information & Material Specifications:



*INDICATES CxC MODEL

Model #	Size	A	B	C	D	E	Cv*
H100-403	1/2"	2.00	0.50	1.53	0.59	2.95	20.25
*H100-413	1/2"	2.32	0.43	1.53	0.59	2.95	20.25
H100-404	3/4"	2.32	0.52	1.93	0.79	3.74	41.83
*H100-414	3/4"	2.99	0.63	1.93	0.79	3.74	41.83
H100-405	1"	2.67	0.55	2.40	1.00	4.72	78.38
*H100-415	1"	3.54	0.73	2.40	1.00	4.72	78.38
H100-406	1-1/4"	3.22	0.65	2.60	1.25	4.72	132.10
*H100-416	1-1/4"	4.05	0.78	2.60	1.26	4.72	132.10
H100-407	1-1/2"	3.68	0.68	3.22	1.57	5.90	206.96
*H100-417	1-1/2"	4.52	0.82	3.22	1.57	5.90	206.96
H100-408	2"	4.29	0.75	3.50	2.00	5.90	346.00
*H100-418	2"	5.41	0.94	3.50	2.00	5.90	346.00
H100-409	2-1/2"	6.06	1.44	4.45	2.48	7.87	484.39
*H100-419	2-1/2"	7.28	1.59	4.47	2.48	7.87	484.39
H100-410	3"	7.08	1.46	4.75	2.99	7.87	638.50
*H100-420	3"	8.46	1.61	4.75	2.99	7.87	638.50
H100-411	4"	8.66	1.51	5.88	3.93	9.84	1092.0

Valve Body:	Hot Forged Brass
Ball:	Chrome Plated/Hot Forged Brass
Stem:	Extruded Brass
Gland Nut:	Extruded Brass
Lever Handle:	Dacromet Coated Steel w/PVC Grip
Lever Nut:	Dacromet Coated Steel
Seats & Packing:	Virgin PTFE
O-Rings:	Viton

Connection Availability:

Body End:	Female NPT 1/2" thru 4"
	Copper SWT 1/2" thru 3"

Typical Specifications:

Furnish and install where indicated on plans **H100/C** ball valves as provided by **Hydronic Components, Inc.** Valves shall be rated for 600 PSI WOG 1/2"-2" and 400 PSI WOG 2-1/2"-4". Valves shall be provided complete with 100% port isolation valve chrome plated ball and repackable blowout-proof triple seal stem.

JOB: _____ ENGINEER: _____
 REP: _____ CONTRACTOR: _____