

# HCI H100/SS

## 100% PORT BALL VALVE WITH STAINLESS STEEL BALL & STEM SPECIFICATIONS

MECHANICAL

The **H100/SS** by **HCI** is a 100% full port ball valve for use in complementing the **Terminator System** product line where integrated accessory features are not required. Like all **Terminator System** valves the **H100/SS** boasts a state of the art forged brass body TEA coated, with a 316 stainless steel ball and 316 stainless steel stem, Hostafion TFM-1600 packing and seats which insures reliable, leak-free performance.

The **H100/SS** also features the "triple sealed stem". Utilizing Hostafion TFM-1600 packing gland and two Viton O-rings stem seals this valve ensures the most reliable and high cycle-life stem available anywhere. The **H100/SS** is the perfect compliment to the incredibly high standard set forth by all the other **Terminator System** products. Approvals: UL Listed VQGU, MHKZ, YQNZ, YRBX, YRPV, YSDT & UL 842, FM approval, NSF 61-8 Certified, Delta C and CSA Certified.



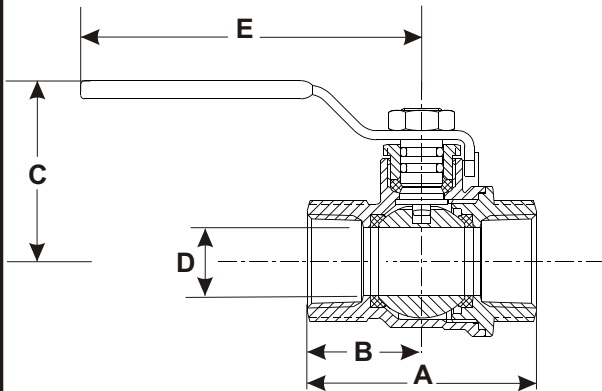
### Pressure/ Temperature Ratings:

1/2" - 3/4": 600 PSI WOG Non - Shock  
 1" - 2": 500 PSI WOG Non - Shock  
 2-1/2" - 4": 400 PSI WOG Non - Shock  
 All Sizes: 366 Deg. F. Maximum

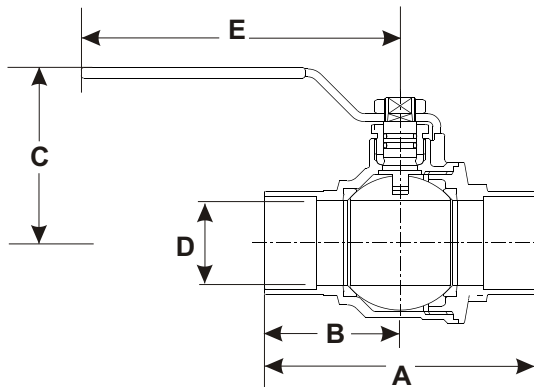
### Optional Accessories:

- Handle Extension - Memory Stop - Red Aluminum T-Handle
- Stainless Steel Round Handle - Flexible Hose Connectors

### Dimensional Information & Material Specifications:



\*INDICATES CxC MODEL



← Direction of Flow →

Model #	Size	A	B	C	D	E	Cv*
H100-503	1/2"	2.48	1.24	1.53	0.59	2.95	20.25
*H100-513	1/2"	2.48	1.24	1.53	0.59	2.95	20.25
H100-504	3/4"	2.71	1.36	1.93	0.79	3.74	41.83
*H100-514	3/4"	3.26	1.63	1.88	0.79	3.74	41.83
H100-505	1"	3.30	1.65	2.40	1.00	4.72	78.38
*H100-515	1"	3.93	1.97	2.36	1.00	4.72	78.38
H100-506	1-1/4"	3.78	1.89	2.59	1.25	4.72	132.10
*H100-516	1-1/4"	4.44	2.22	2.59	1.26	4.72	132.10
H100-507	1-1/2"	4.17	2.09	3.22	1.57	5.90	206.96
*H100-517	1-1/2"	5.07	2.54	3.22	1.57	5.90	206.96
H100-508	2"	5.00	2.50	3.50	2.00	5.90	346.00
*H100-518	2"	6.22	3.11	3.50	2.00	5.90	346.00
H100-509	2-1/2"	6.06	3.03	4.72	2.48	7.87	484.39
*H100-519	2-1/2"	7.28	3.64	4.52	2.48	7.87	484.39
H100-510	3"	7.08	3.54	5.31	2.99	7.87	638.50
*H100-520	3"	8.46	4.23	4.52	2.99	7.87	638.50

**Note:** The Cv factor is the flow rate, in GPM through the valve at a 1 PSID.

Valve Body:	Hot Forged Brass - TEA Coated
Ball:	316 Stainless Steel
Stem:	316 Stainless Steel
Gland Nut:	Extruded Brass
Lever Handle:	Dacromet Coated Steel w/PVC Grip
Lever Nut:	Dacromet Coated Steel
Seats & Packing:	Hostafion TFM 1600
O-Rings:	Viton

### Connection Availability:

Body End:	Female NPT 1/2" thru 3"
	Copper SWT 1/2" thru 3"

### Typical Specifications:

Furnish and install where indicated on plans **H100/SS** ball valves as provided by **Hydronic Components, Inc.** Valves shall be rated for 600 PSI WOG 1/2" - 3/4", 500 PSI WOG 1" - 2" and 400 PSI WOG 2-1/2"-3". Valves shall be provided complete with 100% port isolation valve, TEA coated brass body, 316 stainless steel ball, 316 stainless steel stem and repackageable blowout-proof triple seal stem.

JOB: \_\_\_\_\_ ENGINEER: \_\_\_\_\_

REP: \_\_\_\_\_ CONTRACTOR: \_\_\_\_\_



innovative hydronic components and accessories for the HVAC industry.

7243 Miller Drive - Suite 200 - Warren, MI 48092

Phone: 1-800-313-HVAC

Fax: 1-866-340-0991

HCI-46/2-08