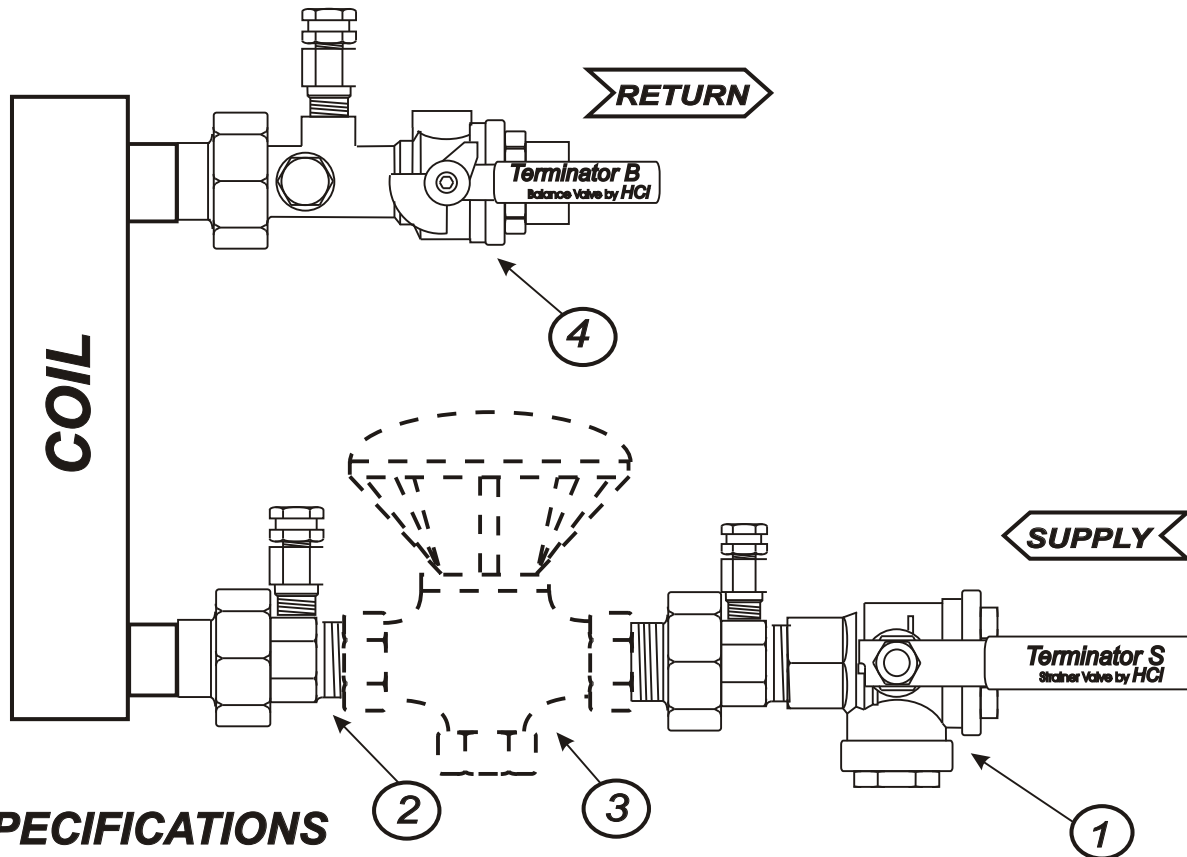


TYPICAL 2-WAY HW or CHW COIL PIPING DETAIL (SUPPLY SIDE CONTROL VALVE)

Note: Detail shown as plain view and is not to scale.



SPECIFICATIONS

1. **Terminator S** - Forged brass body, full port chrome plated brass ball, repackable blowout-proof stem with two Viton O-rings & teflon packing, integral stainless steel strainer basket serviceable without draining pipe or coil, with dielectric union & 1/4" pressure temperature readout port.
2. **Terminator U** - Dielectric union with forged brass body & nut, and integrated 1/4" pressure temperature readout port.
3. **2-WAY CONTROL VALVE** - Furnished and piped by others.
4. **Terminator B** - Balance/shutoff valve with forged brass body, chrome plated brass ball, repackable blowout-proof stem with two Viton O-rings & teflon packing, high-signal, low-loss venturi, and integrated union, 1/4" pressure temperature readout ports and memory stop.

NOTE:

Items 1, 2 & 4 to be provided to the jobsite as prepackaged components bagged and tagged per terminal unit. Specification information on individual components within the package available upon request. Detail shown as plain view only and is not to scale. Actual piping may vary to accommodate physical constraint.

AVAILABLE OPTIONS - Drain valve, manual & automatic air vent, memory stop, handle & accessory extension, red aluminum T-handle, stainless steel round handle, schrader valves & flexible hose connectors.

JOB: _____ ENGINEER: _____ DWG NO: PP0004b
 REP: _____ CONTRACTOR: _____ DRAWN BY: MAW
 DATE: 8-9-01